



## Corrigendum

Corrigendum to "Biosynthesis of the diterpenoid steviol, an *ent*-kaurene derivative from *Stevia rebaudiana* Bertoni, via the methylerythritol phosphate pathway"  
[Tetrahedron Letters 41 (2000) 6407]<sup>†</sup>

Nicole Totté,<sup>a</sup> Lionel Charon,<sup>b</sup> Michel Rohmer,<sup>b</sup> Frans Compennolle,<sup>c</sup> Ilse Baboeuf<sup>a</sup> and Jan M. C. Geuns<sup>a,\*</sup>

<sup>a</sup>Laboratorium Plantenfysiologie, Katholieke Universiteit Leuven, Kard. Mercierlaan 92, 3001 Leuven, Belgium

<sup>b</sup>Université Louis Pasteur/CNRS, Institut Le Bel, 4 rue Blaise Pascal, 67070 Strasbourg Cedex, France

<sup>c</sup>Laboratorium Organische Synthese, Katholieke Universiteit Leuven, Celestijnenlaan 200F, 3001 Leuven, Belgium

Figure 1 on page 6408 was found to contain an error. The corrected version is shown below.

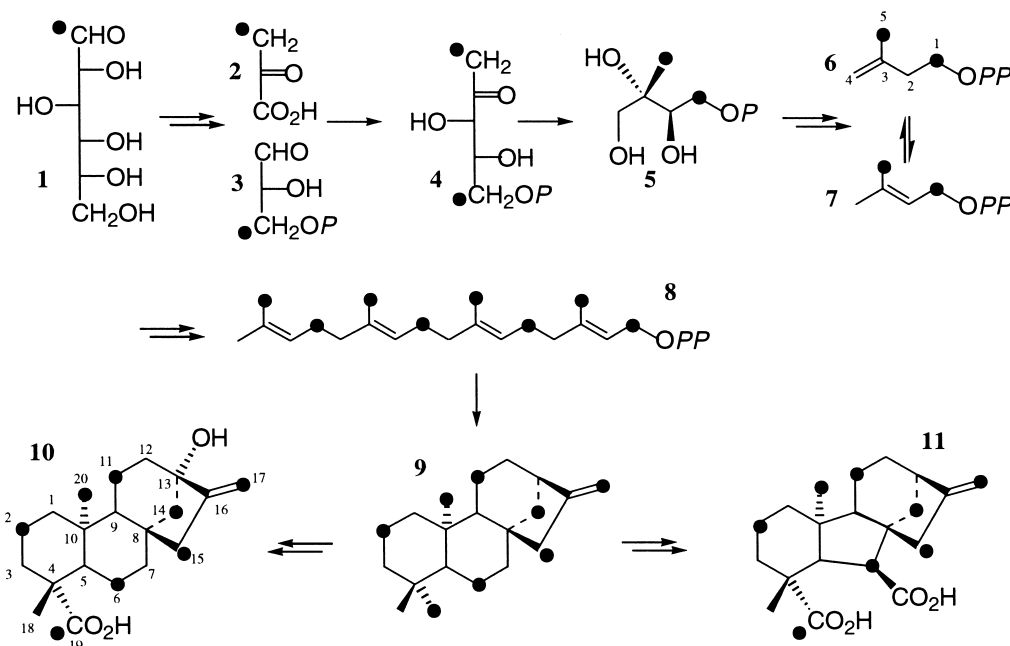


Figure 1. Steviol biosynthesis from [1-<sup>13</sup>C]glucose via glycolysis and the MEP pathway

\* Corresponding author. Fax: +32 16 321509; e-mail: jan.geuns@bio.kuleuven.ac.be

<sup>†</sup> PII of original article: S0040-4039(00)01094-7